



INVENTORY REDUCTION



AUCTION



NO RESERVE - BID IN PERSON OR ONLINE

Thursday, December 11 - 10:30 a.m.

Join us in person at:

Al Hughes Auctions
21929 221st St. S
Pacific Junction, IA 51561

Or bid online at:

WWW.AGRIVISIONEQUIPAUCTION.COM



Online Bidding Provided By
Equipmentfacts
Powered by TractorHouse.com, MachineryTrader.com, TruckPaper.com & MarketBook.com

AgDirect
POWERED BY FARM CREDIT.

AgDirect @special financing | Call 1-888-525-9805 or
visit agdirect.com to apply.

Subject to credit approval. Rates may change. Terms and
conditions apply.

CONTACT US

Matt Raasch
515-210-5673
AGRIVISION EQUIP Used Equip Mgr

Auctioneers:
Allan Hughes - 402-672-3621
Jake Rice - 641-202-3315

For more information about the lots in this auction, auction details
and to register to bid online, visit:

WWW.AGRIVISIONEQUIPAUCTION.COM



2022 John Deere Gator XUV 835M - 1,684 hrs



2022 John Deere Gator XUV 835M - 1,884 hrs



2010 Rice Trailer
16 ft



2021 GMC Sierra 1500SLT - 145K miles



2020 Chevrolet Silverado 1500 - 181K miles



2022 Deere 324G
753 hrs, 72 in bucket



2022 Deere 318G
3,740 hrs, warranty



2018 Brandt 1300HP



1995 Brent 440



Pro-Tote 8 Elite



John Deere 7



2018 Kuhn GMD310HD
10 ft



2021 John Deere C450
14 ft



2021 New Holland Roll-Belt 560 - 13,000 bales



2019 Case IH RB565
4673 bales



2019 H&H Trailer
25 ft x 102 in

WWW.AGRIVISIONEQUIPAUCTION.COM



17

2018 Ford F250XL
153K miles



18

2021 Ford F250
118K miles



19

2023 Deere 324G
116 hrs, bucket



20

2020 John Deere Gator
XUV 835M - 553 hrs



21

2018 John Deere Gator
XUV 835M - 1,435 hrs



22

2020 John Deere Gator
XUV 835R - 3,069 hrs



23

2021 RAM 3500 HD
59K miles



24

2015 Ford F550
130K miles



25

2014 Peterbilt 337
233K miles



26

2011 Case IH Patriot 3330
3,501 hrs, 100 ft booms,
20 in spacings,
1,000 gal tank



27

2014 Ag-Chem Rogator 900
4,305 hrs, 100 ft booms, 20 in
spacings, 900 gal tank



28

1997 Ag-Chem Rogator
854 - 2,982 hrs, 80 ft
booms, 20 in spacings,
800 gal tank



29

2019 John Deere F4365
2,549 hrs, 70 ft spread,
1 bin



30

2014 John Deere
1990CCS - 35 ft, 15 in
spacings



31

2014 John Deere
1990CCS - 40 ft, 15 in
spacings



32

2018 John Deere Gator
XUV 835R - 1,276 hrs

Allan Hughes
402-672-3621
WWW.ALHUGHESAUCTION.COM

LAND & REAL ESTATE AUCTIONS
FARM EQUIPMENT AUCTIONS
ESTATE/MOVING AUCTIONS





2022 John Deere Gator XUV 835R - 1,422 hrs



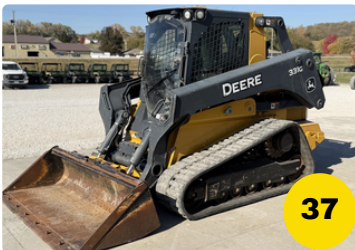
2019 John Deere Gator XUV 835R



2018 Deere 333G
1,138 hrs, 18 in tracks,
84 in bucket



2021 Deere 333G
1,620 hrs, 18 in tracks,
84 in bucket



207 Deere 331G
1,054 hrs, 84 in bucket



2019 John Deere R4038
2,366 hrs, 120 ft booms,
15 in spacings,
1000 gal tank



2018 John Deere R4045
3,010 hrs, 120 ft booms,
15 in spacings



2016 John Deere R4038
2,442 hrs, 120 ft boom,
15 in spacings,
1000 gal tank



2018 John Deere R4038
2,966 hrs, 120 ft booms,
15 in spacings,
1000 gal tank



2016 John Deere R4038
3,144 hrs, 120 ft booms,
15 in spacings,
1000 gal tank



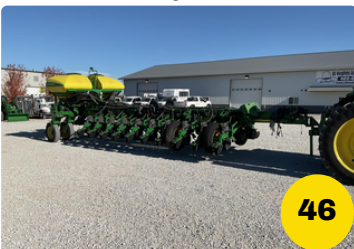
2016 John Deere DB60
36 row, 20 in spacings



2020 John Deere 1795
6,559 ac, 12/23 row



2005 John Deere 1790
27,000 ac, 16/31 row



2013 John Deere 1770CCS - 16,000 ac, 24 row, 30 in



2018 John Deere 9570R
4,850 hrs, 4WD, 5 hyd,
Powershift



2013 John Deere 9510R
4,367 hrs, 4WD, 4 hyd,
Powershift

WWW.AGRIVISIONEQUIPAUCTION.COM



49

John Deere 9470R
3,871 hrs, 4WD, 5 hyd,
Powershift



50

2017 John Deere 9620RX
3,896 hrs, Quad Track,
5 hyd, Powershift



51

2019 John Deere 9570RT
3,023 hrs, Track, 5 hyd,
Powershift



52

2013 John Deere 9560RT
3,216 hrs, Track, 4 hyd,
Powershift



53

2015 Challenger MT755E
1,970 hrs, Track, 5 hyd,
PTO, Powershift



54

2013 John Deere 8310RT
7,400 hrs, Track, 6 hyd,
PTO, IVT



55

2016 Kinze 3660ASD
16/31 row



56

2010 Kinze 3660ASD
14,000 acres,
16/30-31 row



57

2013 Case IH 1265
32 rows, 30 in



58

2010 Case IH 1250
24,000 ac, 24 row, 30 in



59

2012 Case IH 1250
18,350 ac, 12 row, 30 in



60

2023 John Deere 8R250
1,067 hrs, MFWD, 5 hyd,
PTO, Powershift



61

2017 John Deere 8370R
4,925 hrs, MFWD, 5 hyd,
PTO, IVT



62

2013 John Deere 8335R
3,711 hrs, MFWD, 5 hyd,
PTO, ITV



63

2015 John Deere 8245R
4,147 hrs, MFWD, 5 hyd,
PTO, IVT



64

2024 John Deere 6155M
560 hrs, MFWD, 3 hyd,
PTO, PowerQuad

RICE
AUCTION COMPANY

Join us for the Miller Brothers
Retirement and Year End
Consignment on Dec 16th, 2025
1443 US Hwy-34, Creston, IA

Jake Rice
641-202-3315
WWW.RICEAUCTIONCOMPANY.COM



65

2024 John Deere 6130M
300 hrs, MFWD, 3 hyd,
PTO, PowerQuad



66

2021 John Deere S760
880 engine/600 separator
hrs, 2WD



67

2009 John Deere 9570STS
3,487 engine/2,190
separator hrs, 2WD



68

2018 John Deere 712FC
12-row folding



69

2013 Mac Don FD75
35 ft



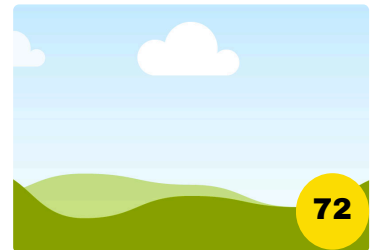
70

2010 Mac Don FD70
40 ft



71

2020 Mac Don FD140
40 ft



72

XXXXXXXXXX



73

2018 John Deere 640FD
40 ft



74

2012 Duo Lift DLT37
37 ft



75

2011 Frontier HT1242
42 ft

Load-out Information

NO EQUIPMENT WILL BE LOADED UNTIL PAYMENT IS MADE. Buyer is responsible for all shipping arrangements and expenses, a dock and loading equipment are available. Load out is available from 8:00 a.m. - 5:00 p.m. Monday - Friday excluding ALL HOLIDAYS. Equipment must be removed from the lot within 10 business days of the auction (December 21, 2025), if equipment is not picked up by close of business on December 21, a \$25 per day storage fee will be charged and will be due at time of pickup. Any items not picked up within 45 days (January 30, 2025) from auction date will be fore fitted without a refund. AGRIVISION EQUIPMENT in Pacific Junction or auction company will remove duals or prep equipment for shipping at their hourly rate, please contact for rates.

Terms & Conditions

There is a buyer's premium for winning online buyers ONLY. The buyer's premium is 3.5% capped at \$1,500 per item. Please Note - No buyer's premium will be charged to those bidders who attend the auction and purchase on site.

The information provided by AGRIVISION EQUIPMENT AND PRAIRIELAND PARTNERS is believed to be accurate, but not guaranteed. Items with full or partial warranty will be noted in their description. If you have questions about specific details regarding any warranties, please contact Matt Raasch, AGRIVISION EQUIPMENT Used Equipment Manager: 515-210-5673. All items sell where-is, as-is with no warranty or guarantee unless stated. ALL SALES ARE FINAL.